

Photodiode Test System (ATE-PD-XXX) Photodiode Burn-in, Reliability & Accelerated Life Testing

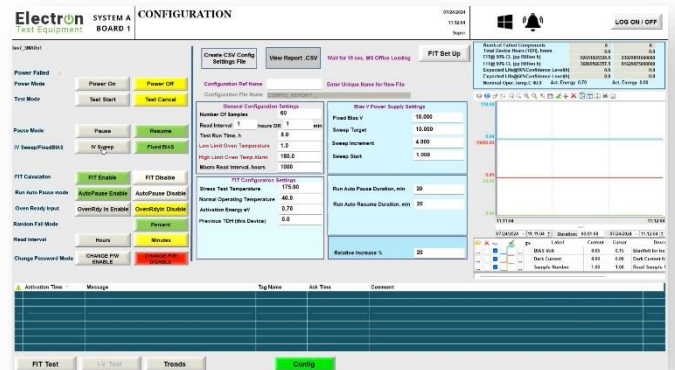
The Photodiode Test System provides accelerated aging, burn-in, and qualification testing for photodiodes. It uses precise control, allowing the operator to test up to 1024 photodiodes in various environmental chamber conditions.



Affordable & High Performance

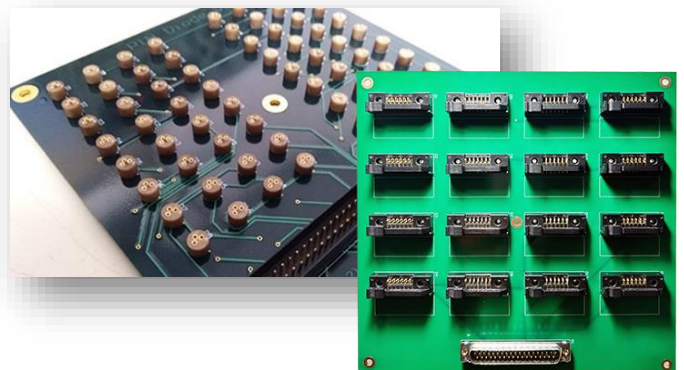
Powerful Software Interface

- An easy to use GUI provides real-time testing and functional reports
- Multiple test scenarios are easily configured without complicated programming.
- FIT (Failure in Time) & Mean Time to Failure (MTTF) calculation
- Dark Current, I-V tests and data collection
- Designed for use by Operators & Supervisors
- E-mail notification



Custom Interface Design

- Custom PCB interface test boards built to meet your packaging specification
- Custom Photodiode Test System input and output interface board connections
- Custom interface control with third party thermal and humidity environmental chambers
- Designed to operate up to 200°C



Technical Data

Reliability Test	FIT (Failure In Time), MTTF (Mean Time to Failure)
Measured Quantities	Dark Current, I-V, Voc, Isc, Vmax, Imax, Imin
Number Test Components	64 - 1024
Voltage Range	0 - 40 VDC
Voltage Accuracy	0.1% + -15mV
Current Range	200nA – 32,000nA
Current Accuracy	0.1% F.S.
Source Measure Board	Custom Interface Board
Voltage Programming Resolution	0.1 V to 5 V, 64 steps
Maximum Current	32,000nA
Default Current	
Measurement Resolution	Analog to Digital 13 bit
Scan Time	2 to 6 seconds
Input Voltage	110V -240V AC
Power Consumption	125 Watts
System Dimensions (mm)	L-515 x W-477 x H-395
Material	Aluminum/Steel

Essential Features

- Conforms to Test Standards**
Telcordia (Bellcore) GR-468-CORE
- Types of Testing**
Accelerated aging, burn-in, and qualification testing
- Designed to Work with All Third-Party Environmental Test Chambers**
Temperature & Humidity
- Software Support**
Custom software modification to meet your requirements
- Power Monitoring & UPS Backup**
Power Failure mode ensures data integrity even through power blackouts
- Built for Easy Use**
Designed to be used by Operators or Supervisors

Connection Diagram for RPT Station

